



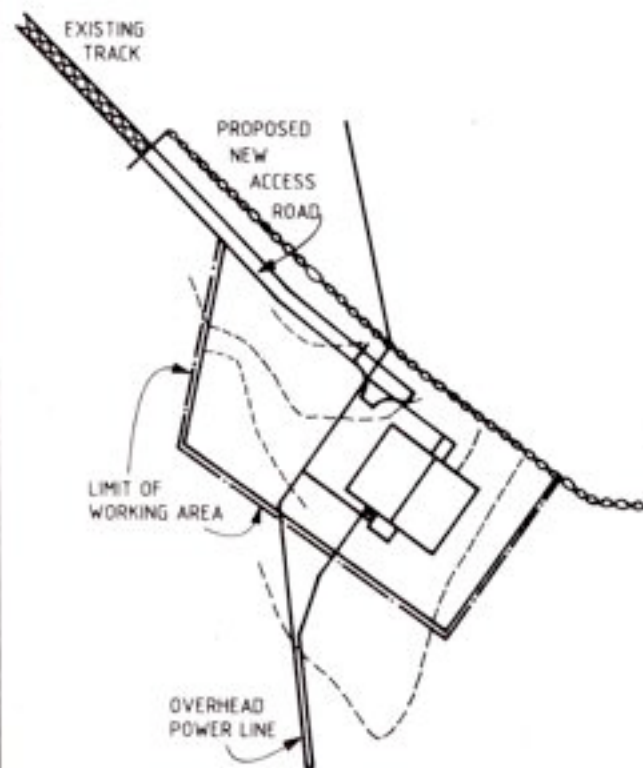
Construction OS&H Project

Job done!

Project

This assignment is described in the briefing paper given to the course participants.

The following slides introduce it briefly



SITE PLAN



LOCATION PLAN



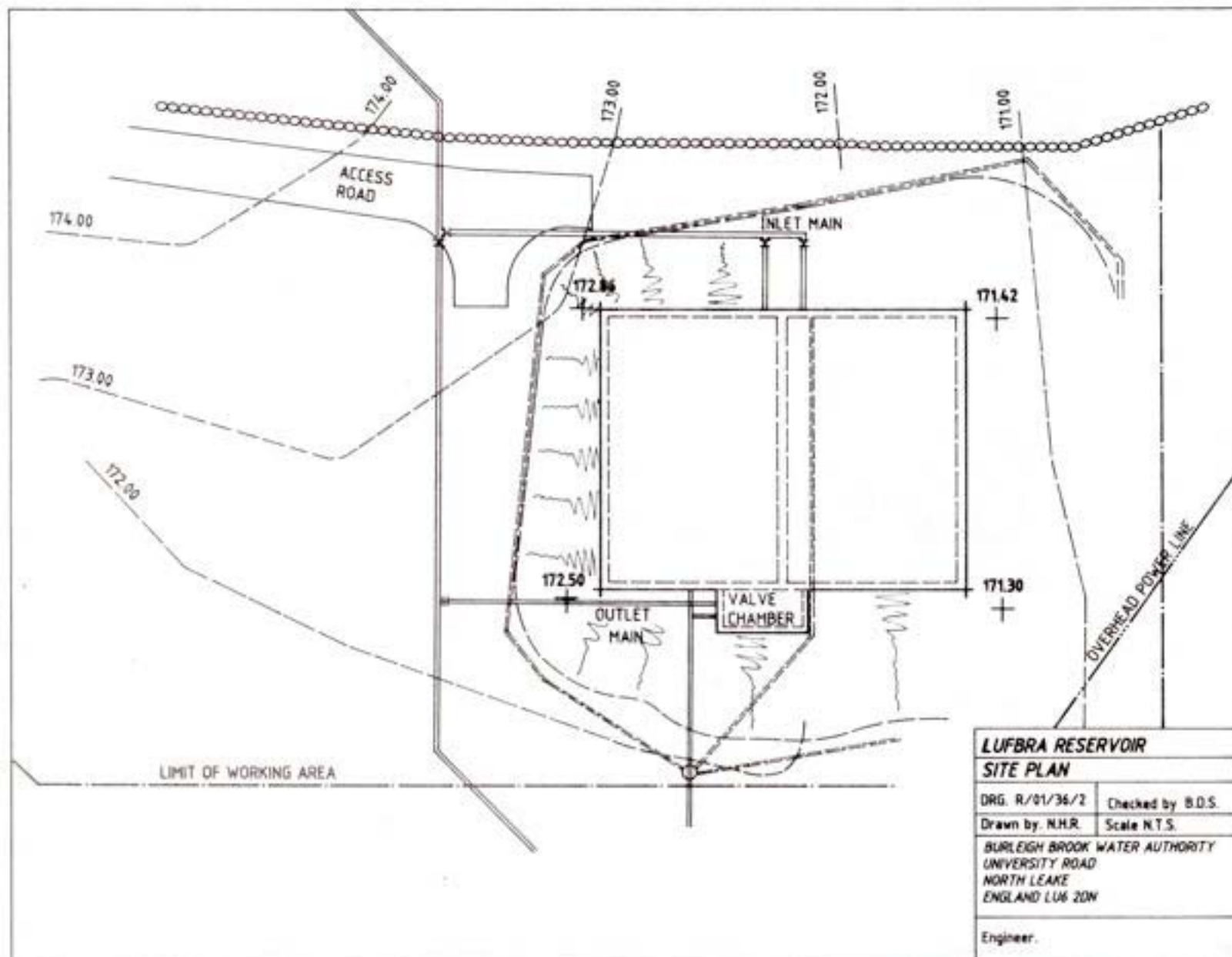
LUFBRA RESERVOIR
LOCATION & SITE PLAN

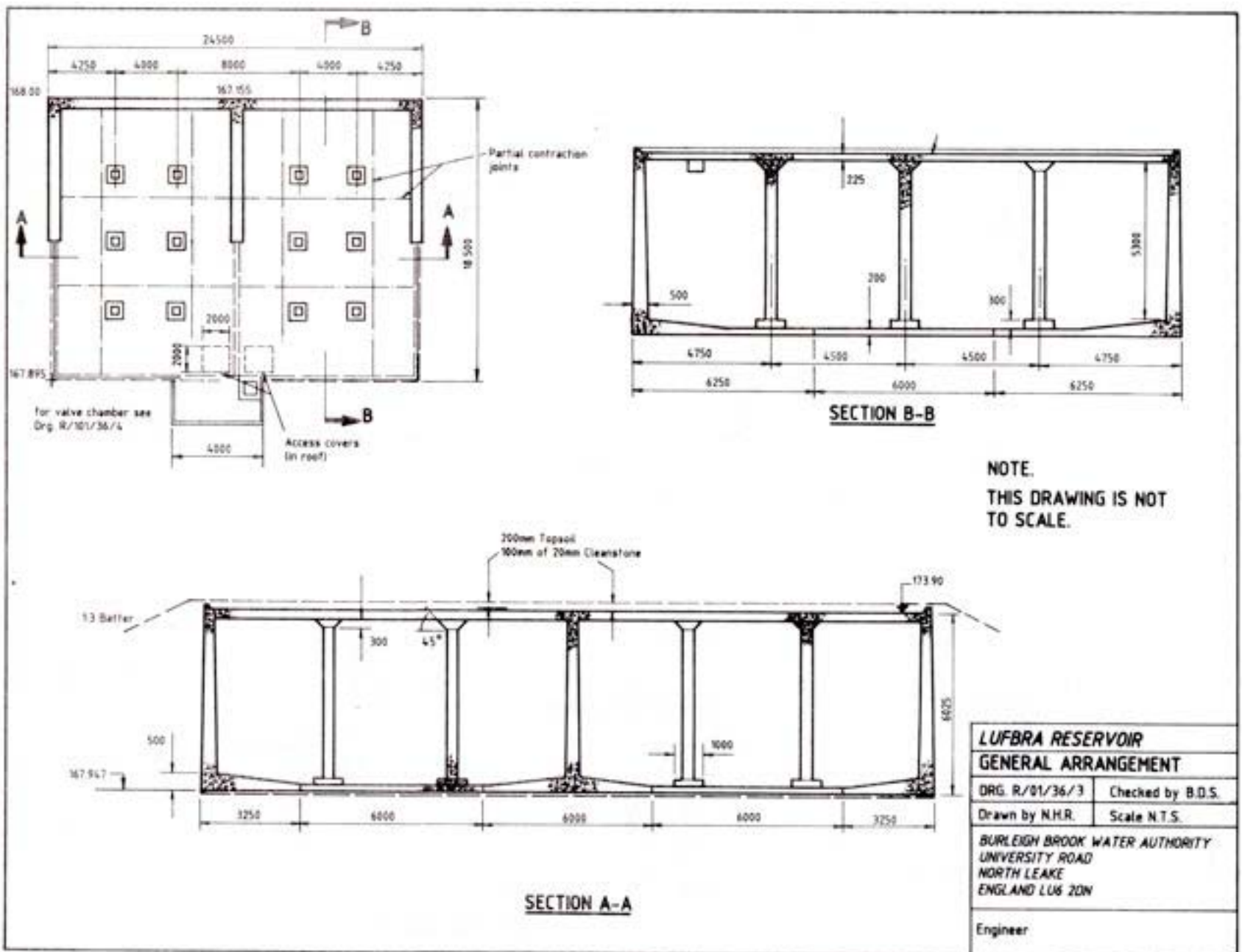
DRG. R/01/36/1 Checked by B.D.S.

Drawn by N.H.R. Scale N.T.S.

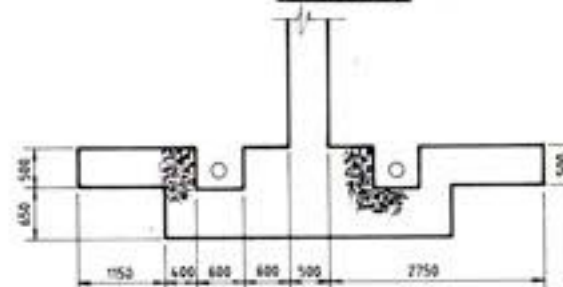
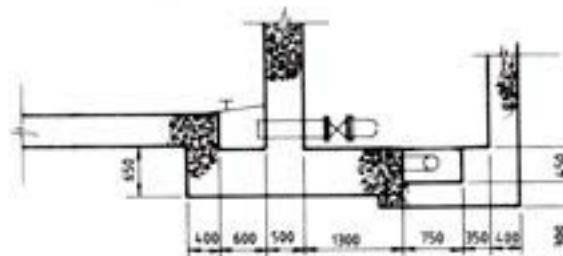
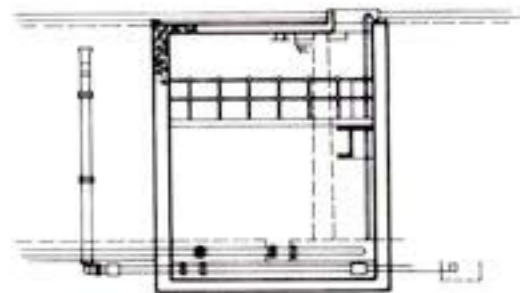
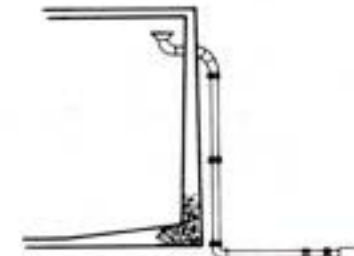
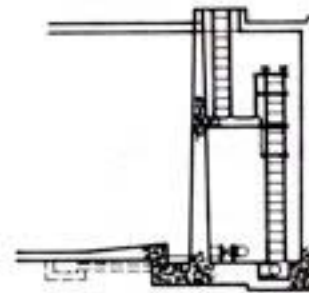
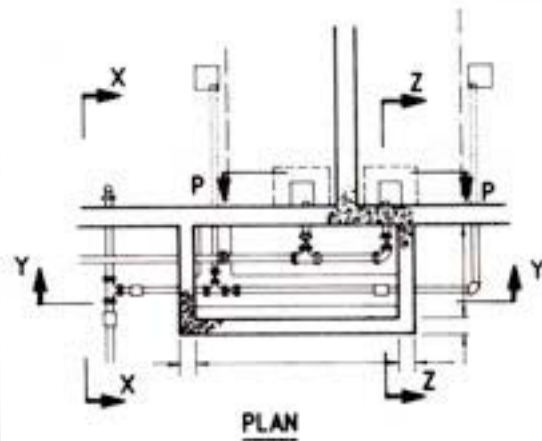
BURLEIGH BROOK WATER AUTHORITY
 UNIVERSITY ROAD
 NORTH LEAKE
 ENGLAND LUG 2DN

Engineer.





PRELIMINARY DRAWING



LUFBRA RESERVOIR VALVE CHAMBER

DRG. R/01/36/4 Checked by B.D.S.

Drawn by N.H.R. Scale N.T.S.

BURLEIGH BROOK WATER AUTHORITY
UNIVERSITY ROAD
NORTH LEAKE
ENGLAND LUG 2DN

Engineer.

Reporting & recording

Each group will write a succinct, illustrated report on their work, which will be copied for all participants and retained by the Tutor.

Each group will nominate a reporter who will present the work of the group.

The presentations will be followed by discussion leading to clear conclusions and recommendations.

The Tutor will summarise the conclusions and recommendations and provide each participant with a copy.