



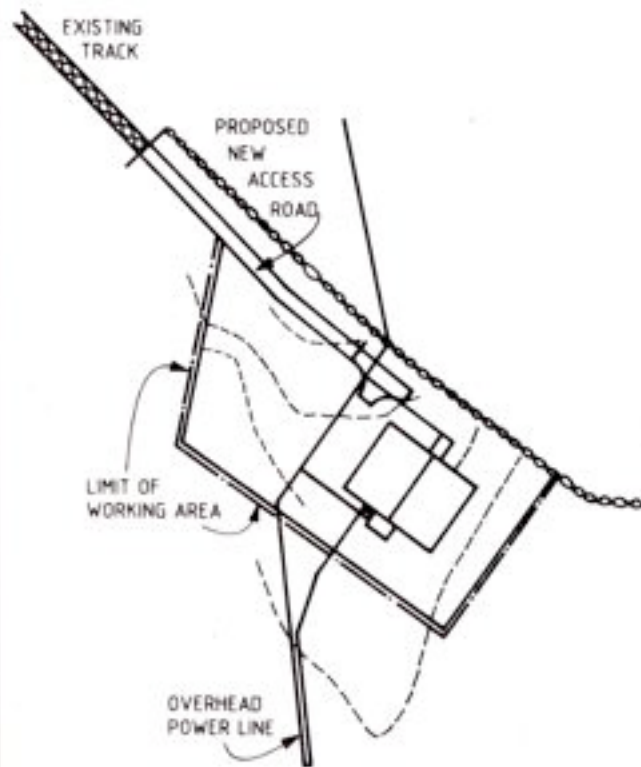
# Construction OS&H Project

**Job done!**

# Project

This assignment is described in the briefing paper given to the course participants.

The following slides introduce it briefly



SITE PLAN



LOCATION PLAN



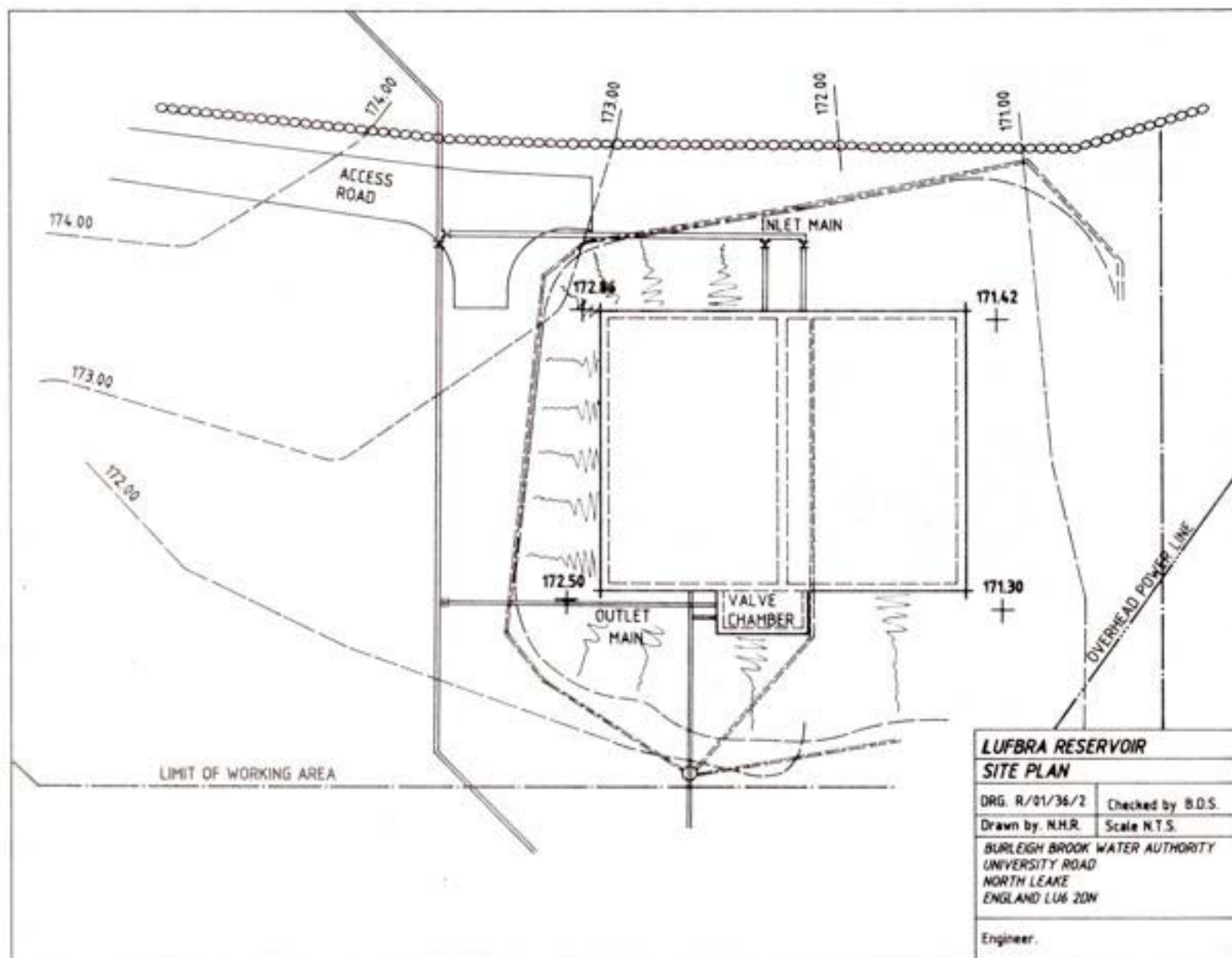
**LUFBRA RESERVOIR**  
**LOCATION & SITE PLAN**

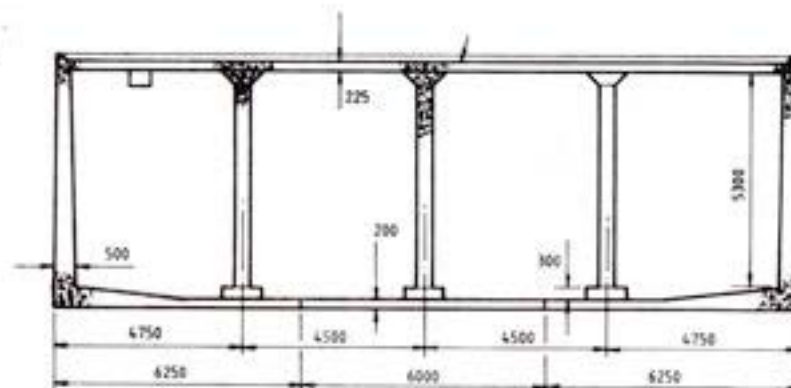
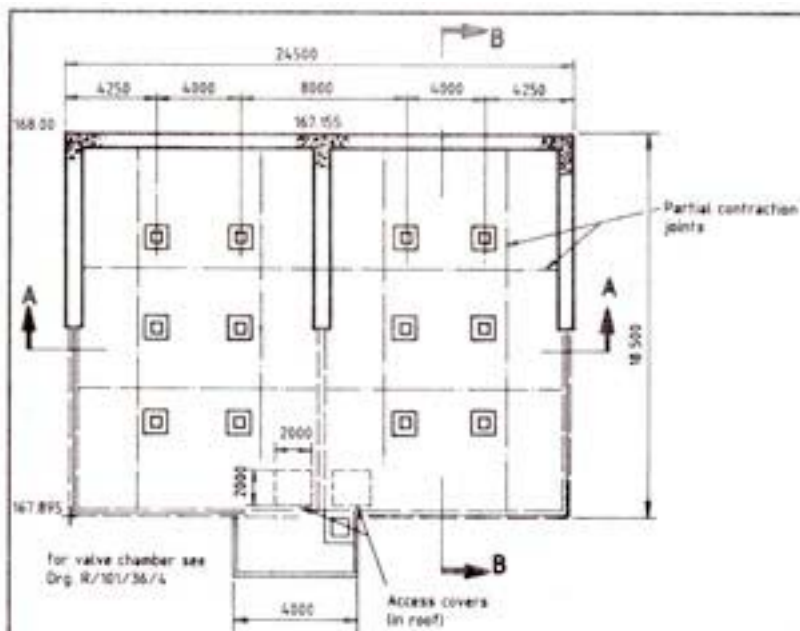
DRG. R/01/36/1 Checked by B.D.S.

Drawn by N.H.R. Scale N.T.S.

BURLEIGH BROOK WATER AUTHORITY  
 UNIVERSITY ROAD  
 NORTH LEAKE  
 ENGLAND LUG 2DN

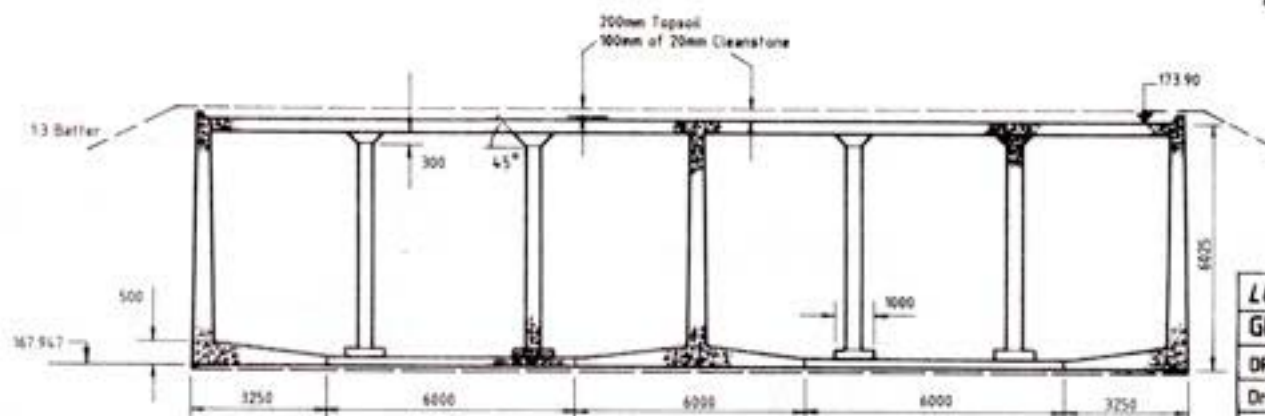
Engineer.





**SECTION B-B**

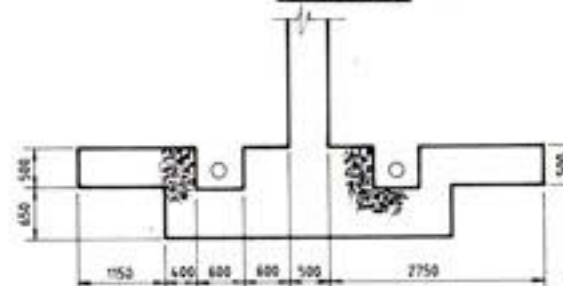
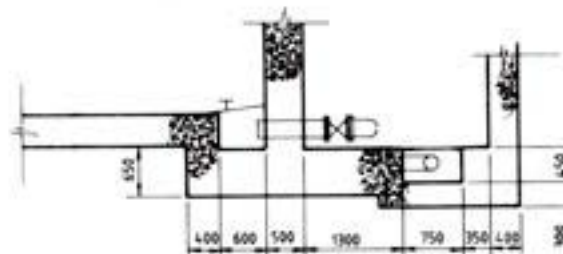
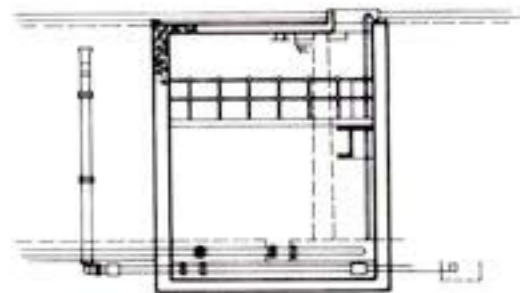
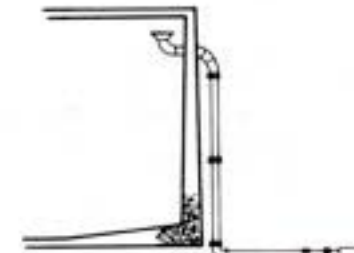
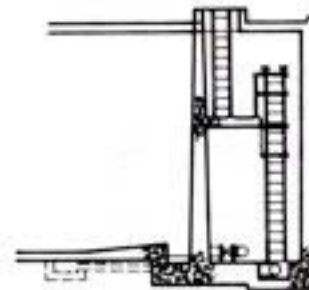
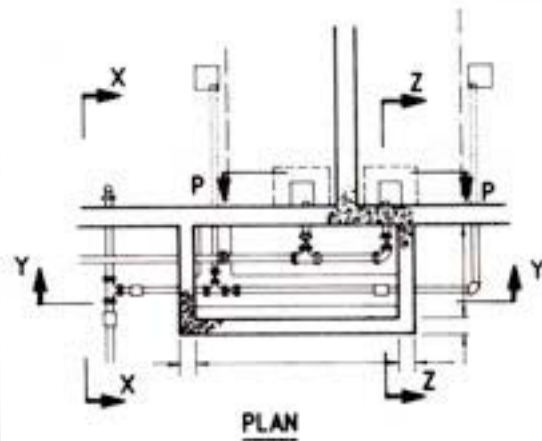
NOTE.  
THIS DRAWING IS NOT  
TO SCALE.



**SECTION A-A**

<b>LUFBRA RESERVOIR</b>	
<b>GENERAL ARRANGEMENT</b>	
DRG. R/01/36/3	Checked by B.D.S.
Drawn by N.H.R.	Scale N.T.S.
BURLEIGH BROOK WATER AUTHORITY UNIVERSITY ROAD NORTH LEAKE ENGLAND LUG 20N	
Engineer	

# PRELIMINARY DRAWING



## **LUFBRA RESERVOIR VALVE CHAMBER**

DRG. R/01/36/4 Checked by B.D.S.

Drawn by N.H.R. Scale N.T.S.

BURLEIGH BROOK WATER AUTHORITY  
UNIVERSITY ROAD  
NORTH LEAKE  
ENGLAND LUG 2DN

Engineer.



# Reporting & recording

Each group will write a succinct, illustrated report on their work, which will be copied for all participants and retained by the Tutor.

Each group will nominate a reporter who will present the work of the group.

The presentations will be followed by discussion leading to clear conclusions and recommendations.

The Tutor will summarise the conclusions and recommendations and provide each participant with a copy.